



PowerMaster[®] 5 Series

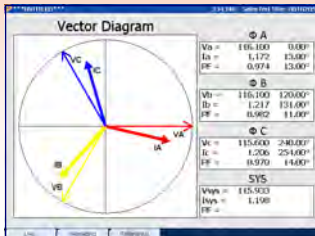
True 3 Φ Analyzing Standard with Integrated Current Source

Powermetrix is pleased to introduce the most innovative field testing device in the electric utility industry. The PowerMaster[®] is a top of the line field instrument with a true 3-phase analyzing standard and integrated current and voltage source. With an accuracy of $\pm 0.04\%$ in the field, the PowerMaster[®] 5 Series is more accurate than most lab standards, and 5 times more accurate than most meters. The user interface is a Windows CE based program that enables the user to perform complex tasks with an easy to use dashboard. With the ability to measure all primary and secondary signals, the PowerMaster[®] can simultaneously test all 3 phases for CT burden and ratio errors. It tests

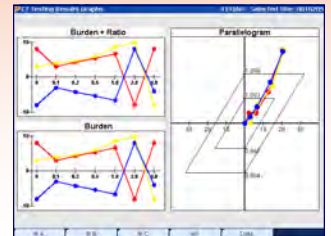
meters under customer load and/or generated load conditions. Perhaps the most impressive feature of the PowerMaster[®] is its ability to fully test sites where there is little or no current present, eliminating the need to re-visit a site. The 5 Series is dedicated to field testing with the most common options required at a competitive price. The PowerMaster[®] is housed in a compact Pelican case, which is waterproof, weather-tight, and extremely rugged. Powermetrix also included an 8.4", full color transfective VGA display, and is offering a 2 year warranty. With many updated features, the PowerMaster[®] will revolutionize field testing!



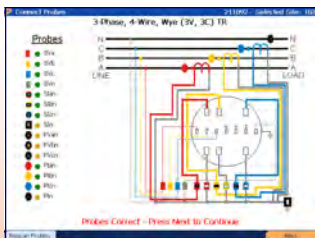
Innovation & Value... A Perfect Combination



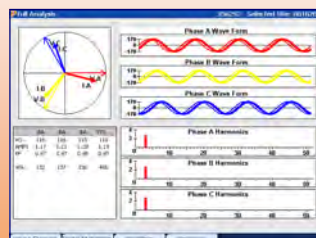
Real-Time Vectors



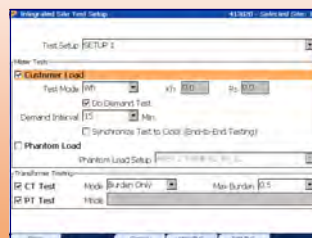
3 Φ Simultaneous CT Tests



Wiring Verification



System Analysis



Custom Test Setups

FL	100.01				
Phase	Voltage	Current	Current PF	Time	Pulses
All	120.01	2.50	1.00	3.03	41

FL PF	99.98				
Phase	Voltage	Current	Current PF	Time	Pulses
All	119.00	2.50	0.90	3.04	28

LL	99.99				
Phase	Voltage	Current	Current PF	Time	Pulses
All	120.06	0.25	1.00	1.03	28

Page 1 / 1

ANSI Meter Tests

PowerMaster[®] Specifications:

AC Current Direct Channels: 3 inputs at 0.1 to 20 amps
AC Current Probe Channels: 6 probe set inputs for clamp-on probes, flex probes, Amp Litewire probes, or combo

AC Voltage Channels: 4 Inputs at 10 to 600 Vrms (autoranging)
Frequency: 45-65 Hz
Power Parameters: kWh, kVARh, kVAh (user selectable per IEEE 1459)
Phase Angle: 0° to 360° (0.1° resolution)
Power Factor: -1.00 to 1.00
Harmonic Analysis: Up to 100th
Auxiliary Power: 100-530VAC with built-in battery charger

Accuracy

Current Direct Channels: ± 0.04% of reading (10° to 35°C ambient)
± 0.07% of reading (-20° to 50°C ambient)
Resolution: ± 0.001% of displayed value

AC Voltage Channels: ± 0.04% of reading (10° to 35°C ambient)
± 0.07% of reading (-20° to 50°C ambient)
Resolution: ± 0.001% of displayed value

Power (kWh, kVARh, kVAh): ± 0.04% of reading (-20° to 50°C ambient)

Current Source (5302)

Current Output: 0.1 to 20A per phase
Resolution: ± 0.002A
Phase Adjustment: 0 to 360° in 0.1° steps each phase
Current Accuracy: ± 0.2%, fundamental only
Total Harmonic Distortion: <1.0%, fundamental only
Compliance Voltage: 0.875V

System Connectivity

External Pulse Input: 1 (for meter pulse pickups)
USB to PC Port: 1 (for connectivity to PC/Laptop)
USB Ports for Peripherals: 2 (for keyboard, mouse, barcode reader, memory Devices, etc.)
RS232 Port: 1 (for legacy devices)
Audio Port: 1 (for microphone, headphones)

Other

Display Resolution: 640 x 480, full color transfective VGA
Display Size: 8.4 in (213.4 mm)
Operating Temperature: -20°C to 50°C (-4°F to 122°F)
Storage Temperature: -30°C to 60°C (-22°F to 140°F)
Humidity: 0 to 95% non-condensing
Internal Battery: 14V NiMH rechargeable (65 Whr)
Dimensions: 21 in x 17 in x 8.5 in (533mm x 432mm x 216 mm)
Weight (not including cables): 5300 28 lbs (12.7 kg)
5302 32 lbs (14.5 kg)
Warranty: 2 Years

*all information subject to change



Model Number Selector

5300 3 Phase Reference Standard (0.04%)
Harmonics Analysis up to 100th
Wiring Verification
Customer Load Meter Testing
3 Phase Simultaneous CT Testing
Demand Testing

5302 + 20A Per Phase Current Source



Contact Info:

Paul Beckman

paul@gmfraser.com

M 289.314.3197

T 905.420.6555

F 905.420.4333